



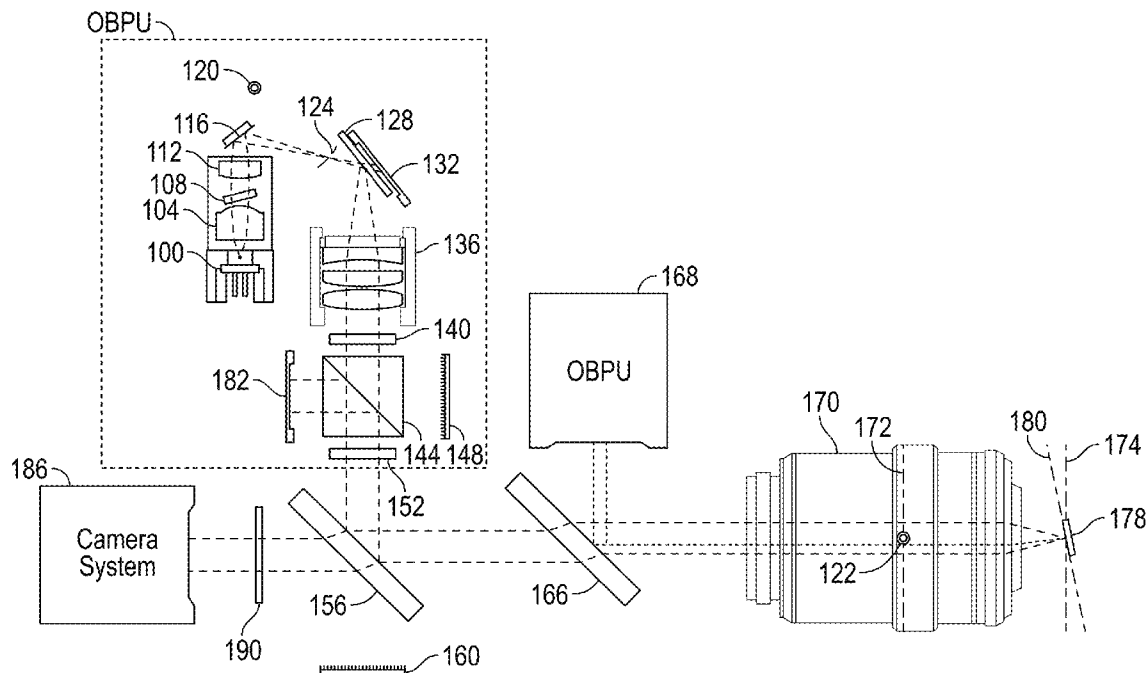
US 20140317790A1

(19) **United States**(12) **Patent Application Publication**
Labuda et al.(10) **Pub. No.: US 2014/0317790 A1**(43) **Pub. Date: Oct. 23, 2014**(54) **OPTICAL BEAM POSITIONING UNIT FOR
ATOMIC FORCE MICROSCOPE****Publication Classification**(71) Applicants: **Aleksander Labuda**, Goleta, CA (US);
Jason Cleveland, Ventura, CA (US);
Deron Walters, Goleta, CA (US); **Roger
Proksch**, Santa Barbara, CA (US)(51) **Int. Cl.**
G01Q 20/02 (2006.01)
(52) **U.S. Cl.**
CPC **G01Q 20/02** (2013.01)
USPC **850/6**(72) Inventors: **Aleksander Labuda**, Goleta, CA (US);
Jason Cleveland, Ventura, CA (US);
Deron Walters, Goleta, CA (US); **Roger
Proksch**, Santa Barbara, CA (US)(57) **ABSTRACT**

This invention relates to an optical light beam positioning system that enables the combination of two or more light beams of different wavelengths to be focused onto a probe or sample of a scientific instrument, such as an atomic force microscope, for a number of specific uses typical to AFMs, like measuring the deflection or oscillation of the probe and illuminating an object for optical imaging, and less traditional ones like photothermal excitation of the probe, photothermal activated changes in the sample, photothermal cleaning of the probe and photochemical, photovoltaic, photothermal and other light beam induced changes in the sample. The focused light beams may be independently positioned relative to each other.

(21) Appl. No.: **13/999,614**(22) Filed: **Mar. 12, 2014****Related U.S. Application Data**

(60) Provisional application No. 61/852,231, filed on Mar. 14, 2013, provisional application No. 61/958,849, filed on Aug. 6, 2013.



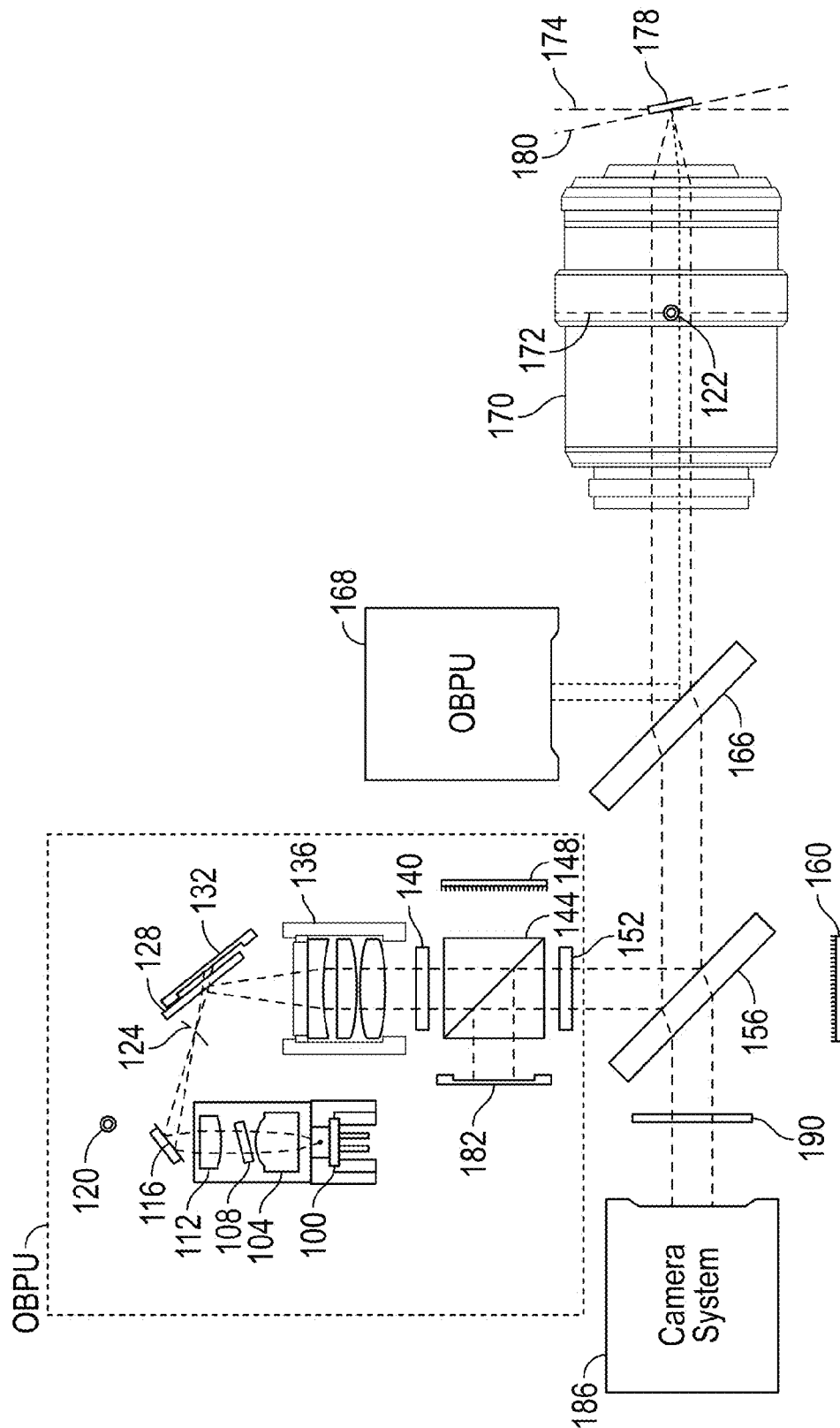


FIG. 1

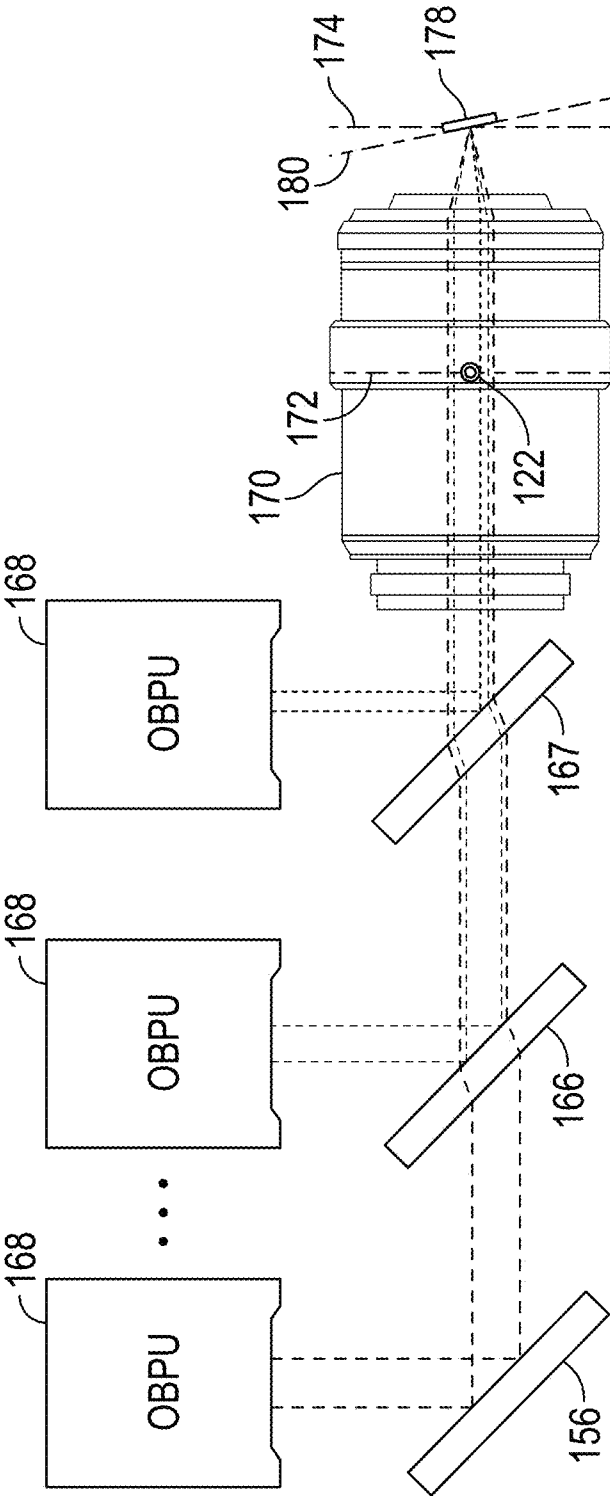


FIG. 2

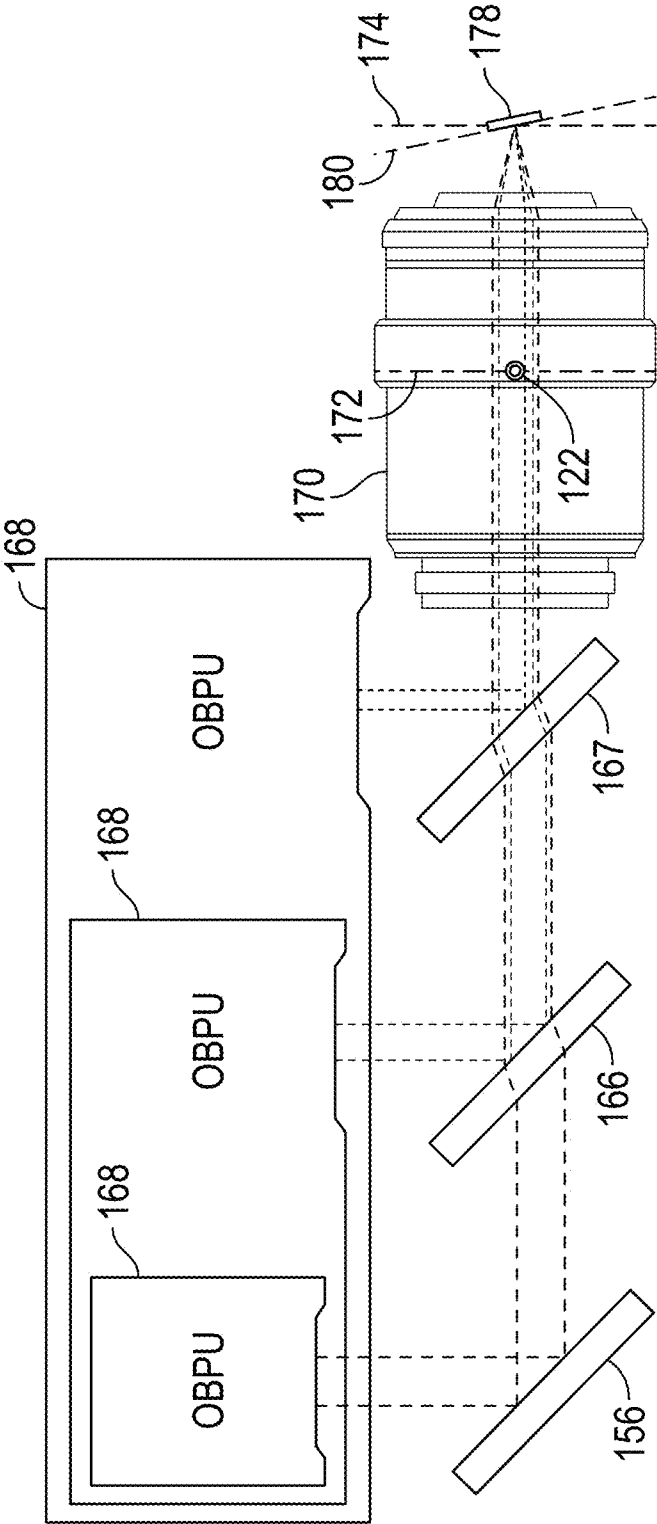


FIG. 3

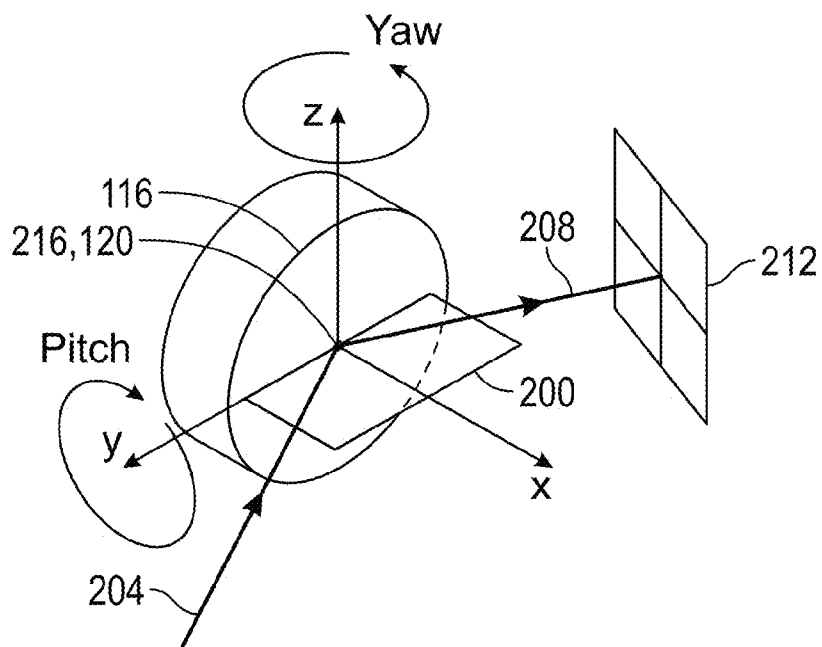


FIG. 4

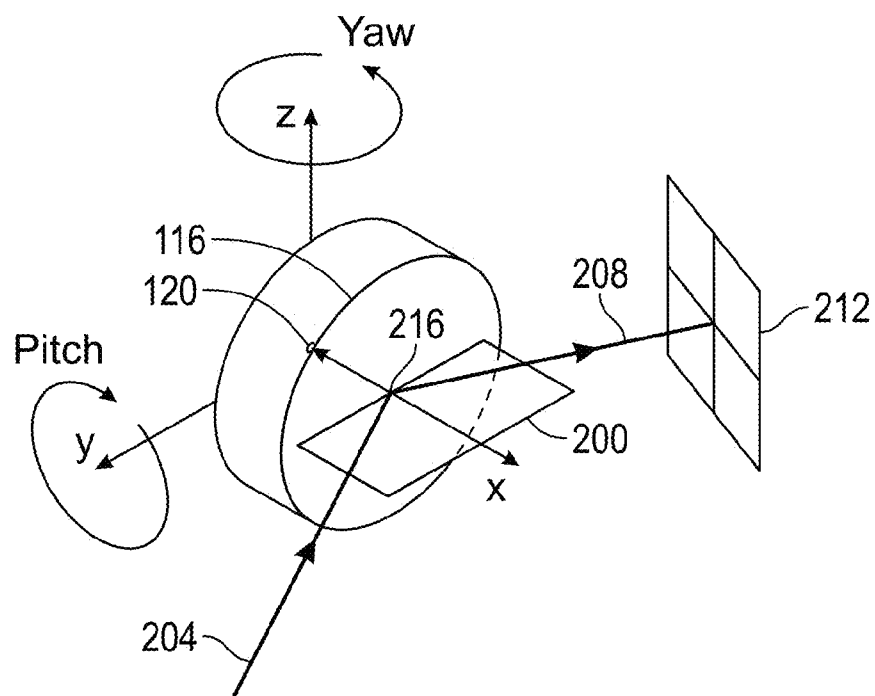


FIG. 5

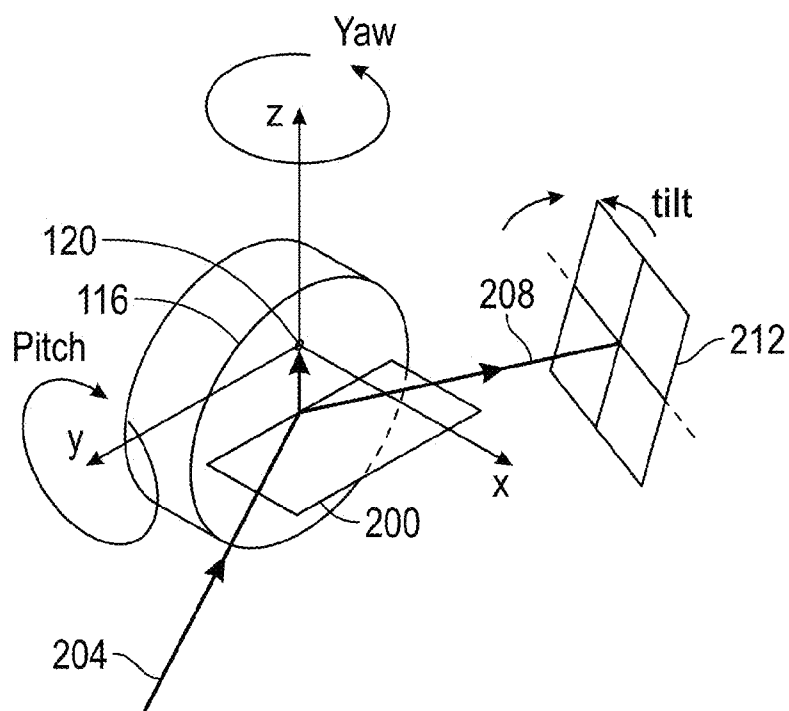


FIG. 6

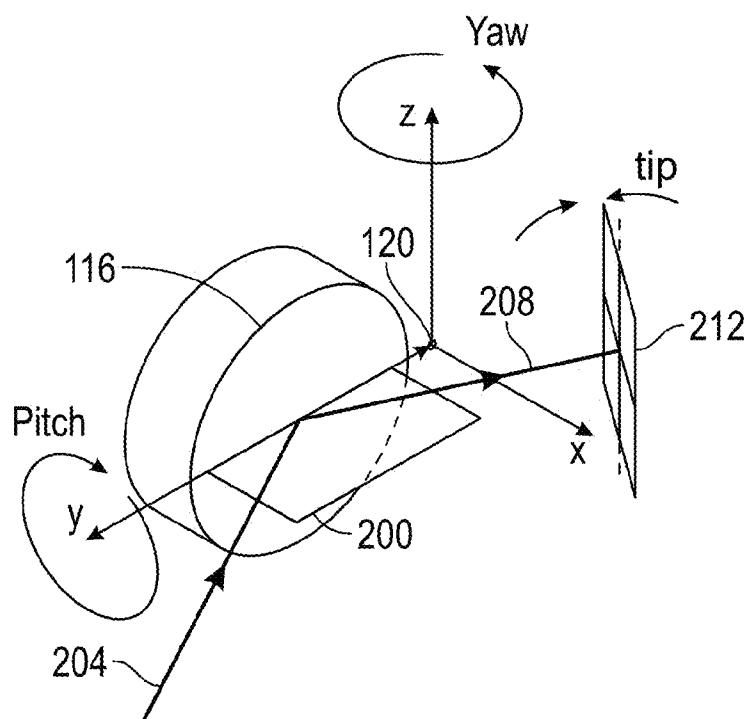


FIG. 7

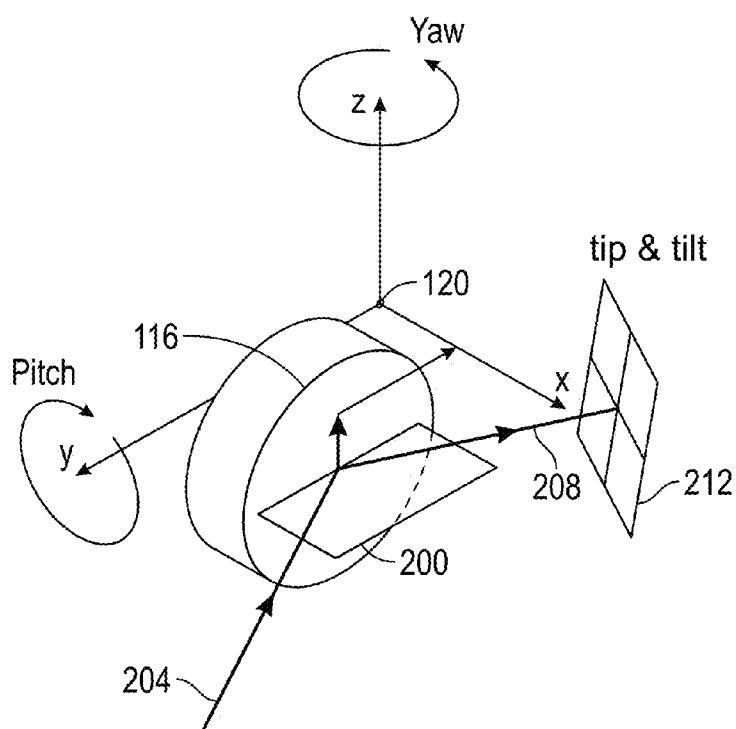


FIG. 8

1st Eigenmode; $f = 1.0$ MHz

2nd Eigenmode; $f = 2.7$ MHz

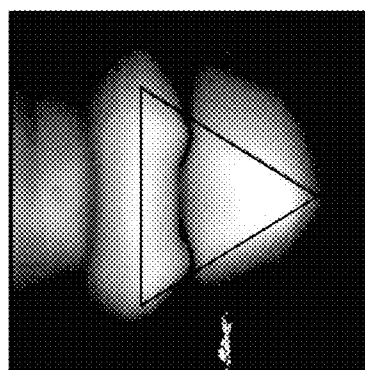
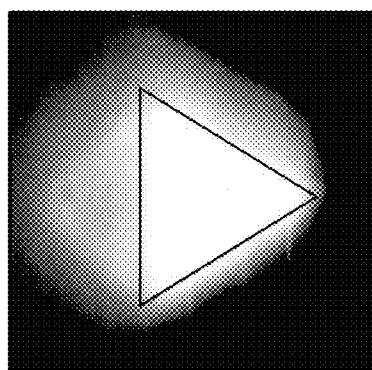


FIG. 9

OPTICAL BEAM POSITIONING UNIT FOR ATOMIC FORCE MICROSCOPE

BACKGROUND OF THE INVENTION

[0001] Scanning probe devices such as the scanning Probe microscope (“SPM”) or atomic force microscope (“AFM”) can be used to obtain an image or other information indicative of the features of a wide range of materials with molecular and even atomic level resolution. In addition, AFMs and SPMs are capable of measuring forces accurately at the piconewton to micronewton range, in a measurement mode known as a force-distance curve or force curve. As the demand for resolution has increased, requiring the measurement of decreasingly smaller forces free of noise artifacts, the old generations of these devices are made obsolete. A demand for faster results, requiring decreasingly smaller cantilevers, only reinforces this obsolescence. The preferable approach is a new device that addresses the central issue of measuring small forces with minimal noise, while providing an array of modules optimizing the performance of the device when using small cantilevers or when doing specialized applications such as optical techniques for biology, optical techniques for photochemical, photothermal, photovoltaic and other light induced changes to the cantilever or sample, nanoindentation and electrochemistry.

[0002] For the sake of convenience, the current description focuses on systems and techniques that may be realized in particular embodiments of scanning probe devices, the SPM or the AFM. Scanning probe devices also include such instruments as 3D molecular force probe instruments, scanning tunneling microscopes (“STMs”), high-resolution profilometers (including mechanical stylus profilometers), surface modification instruments, nanoindenters, chemical/biological sensing probes, instruments for electrical measurements and micro-actuated devices. The systems and techniques described herein may be realized in such other scanning probe devices.

[0003] A SPM or AFM is a device which obtains topographical information (and other sample characteristics) while scanning (e.g., rastering) a sharp tip on the end of a probe relative to the surface of the sample. The information and characteristics are obtained by detecting small changes in the deflection or oscillation of the probe (e.g., by detecting changes in amplitude, deflection, phase, frequency, etc., and using feedback to return the system to a reference state). By scanning the tip relative to the sample, a map of the sample topography or other characteristics may be obtained.

[0004] Changes in the deflection or oscillation of the probe are typically detected by an optical lever arrangement whereby an incident light beam is directed onto the side of the probe opposite the tip and a reflected beam from the probe illuminates a position sensitive detector (“PSD”). As the deflection or oscillation of the probe changes, the position of the reflected spot on the PSD also changes, causing a change in the output from the PSD. Changes in the deflection or oscillation of the probe are typically made to trigger a change in the vertical position of the base of the probe relative to the sample (referred to herein as a change in the Z position, where Z is generally orthogonal to the X/Y plane defined by the sample), in order to maintain the deflection or oscillation at a constant pre-set value. It is this feedback that is typically used to generate a SPM or AFM image.

[0005] SPMs or AFMs can be operated in a number of different sample characterization modes, including contact

modes where the tip of the probe is in constant contact with the sample surface, and AC modes where the tip makes no contact or only intermittent contact with the surface.

[0006] Actuators are commonly used in SPMs and AFMs, for example to raster the probe or to change the position of the base of the probe relative to the sample surface. The purpose of actuators is to provide relative movement between different parts of the SPM or AFM: for example, between the tip of the probe and the sample. For different purposes and different results, it may be useful to actuate the sample or the tip or some combination of both. Sensors are also commonly used in SPMs and AFMs. They are used to detect movement, position, or other attributes of various components of the SPM or AFM, including movement created by actuators.

[0007] For the purposes of this specification, unless otherwise indicated, the term “actuator” refers to a broad array of devices that convert input signals into physical motion, including piezo activated flexures; piezo tubes; piezo stacks, blocks, bimorphs and unimorphs; linear motors; electrostrictive actuators; electrostatic motors; capacitive motors; voice coil actuators; and magnetostrictive actuators; and the term “sensor” or “position sensor” refers to a device that converts a physical quantity such as displacement, velocity or acceleration into one or more signals such as an electrical signal, including optical deflection detectors (including those referred to above as a PSD and those described in U.S. Pat. No. 6,612,160, Apparatus and Method for Isolating and Measuring Movement in Metrology Apparatus); capacitive sensors; inductive sensors (including eddy current sensors); differential transformers (such as those described in U.S. Pat. No. 7,038,443 and continuations thereof; Linear Variable Differential Transformers for High Precision Position Measurements; U.S. Pat. No. 8,269,485 and continuations thereof; Linear Variable Differential Transformer with Digital Electronics; and U.S. Pat. No. 8,502,525, and continuations thereof; Integrated Micro-Actuator and Linear Variable Differential Transformers for High Precision Position Measurements, each of which is hereby incorporated by reference in their entirety); variable reluctance; optical interferometry; strain gages; piezo sensors; and magnetostrictive and electrostrictive sensors.

[0008] Some current SPM/AFMs can take images up to 100 μm^2 , but are typically used in the 1-10 μm^2 regime. Such images typically require from four to ten minutes to acquire. Efforts are currently being made to move toward what has been called “video rate” imaging. Typically those who use this term include producing images at the rate of one per second all the way to a true video rate at the rate of 30 per second. Video rate imaging would enable imaging moving samples, imaging ephemeral events and simply completing imaging on a timelier basis. One important means for moving toward video rate imaging is to decrease the mass of the probe, thereby achieving a higher resonant frequency and as well as a lower spring constant.

[0009] Conventional SPM/AFM probes (which are currently 50-450 μm in length) have spring constants (k) of 0.01-200 N/m and fundamental resonant frequencies (f_R) of 10-500 kHz. Physical laws put limits on the achievable resolution and scan speed of conventional probes, given acceptable noise levels.

[0010] To get the best resolution measurements, one wants the tip of the probe to exert only a low force on the sample. In biology, for example, one often deals with samples that are so soft that forces above 10 pN can modify or damage the

sample. This also holds true for high resolution measurements on hard samples such as inorganic crystals, since higher forces have the effect of pushing the tip into the sample, increasing the interaction area and thus lowering the resolution. For a given deflection of the probe, the force increases with the spring constant of the probe. When operating in air in AC modes where the tip makes only intermittent contact with the sample surface, spring constants below 30 N/m are desirable. For general operation in fluid, very small spring constants (less than about 1.0 N/m) are desirable.

[0011] To get measurements with higher scan speeds, one wants probes with a high resonant frequencies. After passing over a sample feature, the probe response is about $1/f_R$ seconds for contact modes and Q/f_R seconds for AC modes (where Q is the quality factor for the probe). This sets a fundamental limit on scanning speed: raising the response time of the probe requires a probe with a high f_R or, in the case of AC modes, a low Q .

[0012] A high resonant frequency also means lower noise operation. The thermal noise of a probe involves fixed noise energy of the order of kT (where k is the Boltzmann constant and T is the temperature in Kelvin) spread over a frequency range up to approximately the f_R for the probe. Thus, the higher f_R , the lower the noise per unit band width below f_R .

[0013] Probes with a low spring constant and a high resonant frequency can be achieved by making smaller and thinner probes. However, using current SPMs/AFMs with probes significantly smaller than conventional ones presents difficulties. In general, optimal optical lever detection requires that the spot from the light beam directed onto the side of the probe opposite the tip should substantially fill the area available in one dimension. Underfilling results in a loss of optical lever detection efficiency because the reflected beam diverges more than necessary. Overfilling the lever means losing light and producing unwanted interference fringes due to light reflected from the sample.

[0014] One ideal probe for video rate imaging would have a spring constant in the 1-40 N/m range and a resonant frequency in the 5-10 MHz range. This implies shrinking conventional probes by an order of magnitude, to approximately 5-8 μm in length or width. Such a shrinking, taken together with the requirement that the spot substantially fill the probe, means that the spot on the probe also must be shrunk. The optical system producing the beam incident on the probe should have a numerical aperture (NA) sufficient with the wavelength of the light from the light source to form a focused spot approximately 5-8 μm in diameter in at least one direction.

[0015] The relatively large numerical aperture required to so shrink the spot results in a shallow depth of focus. This can present problems with the refocusing necessary when replacing one probe with another or when using a probe with more than one cantilever. In addition, the large opening angle of the incident beam used to achieve a high numerical aperture can require complex lens systems or an accumulation of lenses in close proximity to the probe.

[0016] A SPM/AFM that takes advantage of these smaller, high f_R , high bandwidth probes is described in U.S. Pat. No. 8,370,960, Modular Atomic Force Microscope, which is hereby incorporated herein by reference in its entirety. The Cypher AFM manufactured by the assignee of that patent, as well as any patent resulting from the current application, provides a portion of the results that would be forthcoming from such smaller, high f_R , high bandwidth probes with

smaller conventional SPM/AFM probes. The Cypher AFM routinely images point lattice defects in crystal surfaces in liquid environments.

SUMMARY OF THE INVENTION

Brief Description of the Drawings

[0017] FIG. 1: A schematic of an optical beam positioning unit of the present invention optics used to form a focused light beam on the probe or the sample.

[0018] FIG. 2: Block diagram showing a light path of the present invention with a multiplicity of optical beam positioning units.

[0019] FIG. 3: Block diagram showing the Steering Mirror of an optical beam positioning unit and the Scheimpflug plane.

[0020] FIG. 4: Block diagram showing the Steering Mirror of an optical beam positioning unit and the Scheimpflug plane with the physical pivot translated along the x-axis.

[0021] FIG. 5: Block diagram showing the Steering Mirror of an optical beam positioning unit and the Scheimpflug plane with the physical pivot translated along the z-axis.

[0022] FIG. 6: Block diagram showing the Steering Mirror of an optical beam positioning unit and the Scheimpflug plane with the physical pivot translated along the y-axis.

[0023] FIG. 7: Block diagram showing the Steering Mirror of an optical beam positioning unit and the Scheimpflug plane with the physical pivot translated along the y-axis and z-axis.

[0024] FIG. 8: Photographs of cantilever response to being driven at different frequencies and locations.

[0025] FIG. 9: Graph showing cantilever response to being driven at different frequencies and locations.

DESCRIPTION OF THE PREFERRED EMBODIMENTS

[0026] As already discussed the focused light beam in AFMs is used to measure the deflection or oscillation of the probe. It is desirable however to focus more than one light beam onto the probe to enable functionalities beyond measuring probe displacement. It is also desirable to focus more than one light beam onto the sample to enable other functionalities. The present invention resolves the design complications that stem from so focusing multiple light beams onto a single cantilever or the sample by overlapping the multiple light beams along a single optical axis of a single objective lens that is used to focus all the light beams congruently. The angular orientation or direction of travel of each light beam and the axial position of the focus of each light beam relative to the optical axis are controlled independently between light beams to allow for independent control of the three dimensional position of the focus location of each light beam relative to the cantilever or sample.

[0027] FIG. 1 shows a schematic of the optical beam positioning OBP unit of the present invention which forms one focused light beam on the probe or the sample. Other focused light beams would employ a similar optical beam positioning unit. In FIG. 1 the light source 100 for the optics emits a divergent beam of light that is substantially collimated by a lens 104. The light source 100 could be a laser diode or another light source such as a superluminescent diode or light-emitting diode. The only requirement is that the power density be high enough to excite the desired effect in the

cantilever or the sample. The lens **104** is preferably aspheric, in order to maximize the quality of the transmitted light beam.

[0028] The collimated (or nearly collimated) light beam exiting the lens **104** may optionally traverse a linear polarizer **108**. The linear polarizer **108** can be rotated about the optical axis relative to the light source **100** (or the light source **100** may be rotated relative to the linear polarizer **108**) in order to maximize the light power throughput or to tune a desired amount of light throughput if the maximum amount of light power is deemed excessive. Also, tilting the linear polarizer **108** relative to the optical axis may be advantageous as it can reduce the amount of back-reflected light returning into the light source **100**. Back-reflected light may cause instabilities in the light emitting process.

[0029] The polarized light beam is subsequently passed through a lens **112** and refocused. This lens may be an aspheric lens, achromatic doublet, or other lens or lens group. The light beam then reflects from a steering mirror **116** that is disposed between the lens **112** and the focus of the polarized light beam **124**. The steering mirror **116** is supported so that it can be rotated about a physical pivot **120**, defined as a point in three-dimensional space. As will be shown below, rotation of the steering mirror **116** about the physical pivot **120** provides a means for moving a focused spot in two dimensions in the plane of the probe or the plane of the sample. For the purposes of this specification these two planes are not shown separately in FIG. **1** but are collectively referred to herein as the target object **178**.

[0030] The functioning of the steering mirror **116** is illustrated in detail in FIG. **3**. In the preferred embodiment of the present invention, the steering mirror **116** can be rotated about three orthogonal axes, two of which are parallel to the mirror **116** surface and are important for the purposes of the invention. The y-axis is one of the axes which is parallel to the mirror **116** surface. The y-axis lies within the plane **200** defined by the incident light beam **204** and the reflected light beam **208**. The z-axis is the other axis which is parallel to the mirror **116** surface. The z-axis is orthogonal to the plane of incidence **200** and not within that plane. Rotating the steering mirror **116** about the y-axis (“pitching” the steering mirror **116**) or about the z-axis (“yawing” the steering mirror **116**), or both, changes the direction and focus of the reflected light beam **204**. Rotating the steering mirror **116** about the x-axis (“rolling” the steering mirror **116**) however has no effect on the direction of the reflected light beam **208**.

[0031] In the preferred embodiment, the steering mirror **116** is provided with means for actuating the pitch and yaw rotations in order to produce the desired changes in the direction and focus of the reflected light beam **204**. This means may preferably be a kinematic stage driven by transducers. The transducers and kinematic stage rotate the steering mirror **116** in two dimensions about the physical pivot **120**. These transducers are preferably fine-pitch leadscrews driven by high-precision stepper motors. Alternately, the means of actuating the pitch and yaw rotations may be a rotary stage, flexure stage, or gimbal stage, and the transducers may be electromechanical motors, DC motors, piezoelectric inertial motors, piezoelectric transducers, or manual positioners. Preferably, if the transducers are stepper motors, they are provided with a gearbox to reduce the mechanical step size such that the positioning of the light beam focus is precise.

[0032] Pitching and/or yawing the steering mirror **116** affects the reflected light beam **208** in two different ways. First, pitching and/or yawing the steering mirror **116** affects

the two-dimensional angular orientation or direction of travel of the reflected light beam **208**. Second, pitching and/or yawing the steering mirror **116** affects the axial position of the focus of the reflected light beam **208**. If the physical pivot **120** (about which the steering mirror **116** can be rotated) is located at the point of incidence **216** (where the incident light beam **204** intersects the reflected light beam **208**), as drawn in FIG. **3**, the effect of pitching/yawing on the axial position of the focus is minimal. Only the angular orientation of the reflected light beam **208** is affected by pitching and/or yawing under this condition. However, if the physical pivot **120** is translated relative to the point of incidence **216** as shown in FIG. **5**, FIG. **6** and FIG. **7**, pitching and/or yawing moves the axial position of the focus of the reflected light beam **208** at the same time that it changes the angular orientation of the reflected light beam **208**. This is crucial to the present invention. When designing the optical system, the exact location of the physical pivot **120** in three-dimensional space is tuned to set a desired relationship between the axial position of the focus and the angular orientation of the reflected light beam **208**. When this relationship is achieved, the axial position of the focus is geometrically constrained to move along a mathematically defined surface, the “Scheimpflug surface” **124**. For small angular changes around the reflected light beam **208** the Scheimpflug surface can be approximated by a “Scheimpflug plane” **212**, as drawn in FIG. **3**. The term Scheimpflug surface **124** refers to an optical principle, the Scheimpflug criterion, which is used to select the desired Scheimpflug plane **124** based on the planes of the target object **178**.

[0033] As displayed in FIG. **4**, translating the physical pivot **120** relative to the point of incidence **216** along the x-axis has no consequence on the orientation of the Scheimpflug plane. With the physical pivot **120** translated only along the x-axis, pitching and/or yawing the steering mirror **116** moves the reflected light beam **208** along the same Scheimpflug plane as it would have moved prior to translation of the physical pivot **120**. Therefore, to understand the operation of the present invention, it suffices to discuss the effect of rotating the steering mirror **116** about rotation axes that are in the plane of the mirror surface, intersecting in a physical pivot **120** that is also in the plane of the mirror surface. It may be noted however that placing the physical pivot **120** along the x-axis a short distance behind the plane of the steering mirror **116** has little effect on performance.

[0034] FIG. **5** illustrates the effect of translating the physical pivot **120** along the z-axis: the Scheimpflug plane **212** is rotated due to simultaneous changes in the axial position of focus and angular orientation of the reflected light beam **208**. Specifically, the Scheimpflug plane **212** is rotated (“tilted”) along an axis that lies parallel to the plane of incidence **200**. The position of the focus moves along a tilted focal plane as the steering mirror **116** is yawed or pitched about the physical pivot **120**.

[0035] FIG. **6** illustrates the effect of translating the physical pivot **120** along the y-axis: the Scheimpflug plane **212** is rotated (“tipped”) along an axis that lies perpendicular to the plane of incidence **200**. Now, the position of the focus moves along a tipped focal plane as the steering mirror **116** is yawed or pitched about the physical pivot **120**.

[0036] FIG. **7** illustrates that translations along both the z-axis and the y-axis may be combined, with the Scheimpflug plane **212** both “tilted” along an axis that lies parallel to the

plane of incidence **200** and “tipped” along an axis that lies perpendicular to the plane of incidence **200**.

[0037] The Scheimpflug surface **124** has an optical image near the front focal plane **174** of the objective lens **170**, which is approximated by the “conjugate Scheimpflug focal plane” **180** as shown in FIG. 1. The tilt angle of the conjugate Scheimpflug focal plane **180** about the optical axis of the reflected beam **208** is preferably tuned to match the tilt angle of the target object **178**. Typically, AFM cantilevers are tilted by an angle between 5 and 15 degrees. It is preferred to position the physical pivot **120** location so as to induce a tilt in the conjugate Scheimpflug focal plane **180** that substantially matches the tilt angle of the cantilever. This allows the movement of the focused beam position along the cantilever by pitching or yawing the steering mirror **116** without the need to refocus the light beam, which would otherwise be required for the tilted cantilever. In an alternative embodiment of this invention, translation of the goniometric lens group **136** may be used to compensate for the tilt angle of the cantilever. However, such an embodiment requires the use of three, instead of only two, motion transducers in order to retain a focused light spot on a tilted cantilever.

[0038] As depicted in FIG. 1, the light beam **208** reflected from the steering mirror **116** converges to a focus at the Scheimpflug surface **124** and subsequently diverges beyond that surface. The diverging light beam is then redirected by reflection off a fold beamsplitter **128**. The fold beamsplitter **128** reflects part of the light beam, while allowing another part to traverse through the fold beamsplitter **128** to a photodetector **132** which measures the total amount of optical power in the light beam. The photodetector **132** can thus be used to tune the desired amount of light power by changing the drive current of the laser diode **100** accordingly or, as previously discussed, by rotating the linear polarizer **108** accordingly. Typically, a small fraction of the light beam will be allowed to traverse through the fold beamsplitter **128** to the photodetector **132** and substantially all the light will be reflected from the fold beamsplitter **128**. This division of the light beam is preferable as it maintains a high optical power density at the target object **178**.

[0039] The photodetector **132** discussed in the previous paragraph may be a linear position-sensitive detector, in which case the position of light beam on the photodetector **132** can be used to determine the axial position of the focus and the angular orientation of the light beam. A calibration procedure may also suffice to determine these two geometric factors. However a linear position-sensitive detector is desirable because it obviates the need for closed-loop position control on the actuators that produce pitch and yaw in the steering mirror **116**. However if closed-loop position control is in any event provided, a linear position-sensitive detector complements such control and provides a reinforcing measure of the nominal position or center position of the steering mirror **116**.

[0040] In the absence of a photodetector **132**, which is optional and not required for the functioning of the present invention, the fold beamsplitter **128** only acts as a mirror redirecting the light. With a different orientation and position of the optical components, the fold beamsplitter **128** may not be necessary.

[0041] After reflecting from the fold beamsplitter **128**, the light beam traverses one or a number of lenses that substantially collimate the beam **136**. This group of lenses is referred to herein as the goniometric lens group. The number and kind

of lenses used to collimate the light beam depends on the exact optical parameters of the particular optical beam positioning unit under consideration as known to those skilled in the art. In the present invention the goniometric lens group **136** is provided with a means for translating the group along the optical axis to change the degree of collimation of the outgoing light beam. Moving the group backward or forward causes the light beam to be more divergent or convergent after traversing the group. This allows a user to adjust the axial position of the final focused spot relative to the target object **178**.

[0042] One possible means of translating the goniometric lens group **136** is by mounting the lens group in a threaded housing that is then rotated in a threaded bore. The mechanical motion of the lens group may be automated via a transducer, such as a motor, or manually adjusted by the user. The number of lenses in the group that may be required to move depends on the desired amount of collimation. The remainder of the lenses in the group, if any, may remain fixed.

[0043] The substantially collimated beam exiting the goniometric lens group **136** can be attenuated, if necessary, by the use of a filter **140** that attenuates the light by a prescribed amount. The filter **140** may be a neutral density filter, a rotationally variable neutral density filter, a colored filter, or a linear polarizing filter. In any case, the filter **140** can be adjusted manually by the user or through an automated mechanism to change the desired amount of light attenuation. Preferable automated mechanisms for this purpose include a rotationally variable neutral density filter on a motorized rotation stage and a motorized filter wheel with a plurality of filters, one of which is disposed in the beam. If filter **140** is a linear polarizing filter, either the filter or the polarizer can be rotated either manually or by some motorized mechanism. In any case it is preferable to electronically identify which, if any, filter **140** is disposed in the light beam so that the resulting beam power may be readily available.

[0044] The light beam emerging from the filter **140** then traverses a polarizing beamsplitter **144** which passes only one polarization direction of the beam. The portion of the beam that is polarized in the orthogonal direction to the desired polarization direction is reflected, rather than transmitted, and then absorbed by a beam dump **148**, such as a black felt surface. The portion of the beam that is polarized in the desired polarization direction is transmitted to a quarter-wave plate **152** which converts the linearly polarized light beam transmitted into a circularly polarized light beam.

[0045] Optical elements in the path of the light beam after it exits the quarter-wave plate **152**, such as the dichroic mirror **156**, may introduce significant phase shifts between s-polarized and p-polarized light in the circularly polarized light beam. In this situation, the desired operation of the polarizing beamsplitter **144** and quarter wave plate **152** can be achieved by replacing the quarter wave plate **152** with a waveplate having sufficient retardance (greater or less than 0.25 waves) with suitable orientation so as to cancel the cumulative phase shift introduced by all subsequent optical elements in the light beam.

[0046] As noted above, the present invention may be used to measure the deflection or oscillation of the probe as is common with AFMs and may also be employed to focus more than one light beam onto the probe (or the sample) to enable functionalities other than measuring probe displacement. When the present invention is used to achieve these other functionalities, detection of the reflected beam from the

sample is not required. In this case, polarizing beamsplitter **144**, waveplate **152** and beam stop **148**, may be omitted without substantially changing the other aspects of the invention, and of course so also may the photodetector **182** used to measure the deflection or oscillation of the probe. In this connection it is necessary to remember that the presence or absence of the polarizing beamsplitter **144** and waveplate **152** have an important effect on the calculation of the correct distances in locating the virtual pivot **122** in the back focal plane **172** of objective lens **170**.

[0047] Substantially all the circularly polarized light beam transmitted from the quarter-wave plate **152** is reflected from a dichroic mirror **156**. Any portion of the beam that may traverse the dichroic mirror **156** is absorbed by a beam dump **160**. A dichroic mirror is used here rather than a conventional mirror so that wavelengths other than the wavelengths in light source **100** will traverse the mirror **156** rather than being reflected, thereby allowing the camera system **186** to image light reflected from the target object **178**.

[0048] The substantially collimated light beam exiting the dichroic mirror **156** then traverses another dichroic mirror **166**, which allows for a light beam from another optical beam positioning unit to be combined into the light path, as will be described in more detail shortly. The collimated light beam then passes through an objective lens **170** that focuses the light beam close to the front focal plane **174** of the objective lens **170**. The target object **178** targeted by the focused light beam is located close to the front focal plane **174** of the objective lens **170**. The objective lens **170** may be a commercially available unit, such as the Olympus LUC Plan Fluor N 20x having a numerical aperture of 0.45, or it may be an objective lens designed specifically for use in this context. Typically, an objective lens for use in this context is composed of several optical components, some of which may be translated with respect to others to adjust the position of the front focal plane relative to the position of the lens, or to adjust the spherical aberration correction of the focused spot. The preferred lens will have apochromatic or semi-apochromatic ("Fluor") correction of chromatic aberrations because it may be anticipated that multiple light beams of different wavelengths producing a plurality of spots will be present. The preferred lens will also have flat field ("Plan") correction for off-axis aberrations because the camera system **186** will preferably incorporate a digital image sensor, and because it may be anticipated that the invention will be used in conjunction with planar samples such as silicon wafers.

[0049] Some portion of the light beam focused by the objective lens **170** close to the front focal plane **174** of the lens will be reflected by the target object **178** also located close to the front focal plane **174**. Another portion will be absorbed. It is also possible that some portion of the light beam will be transmitted through the target object **178**, depending on the material and thickness of the target object **178**, and the wavelength of the light beam.

[0050] Some portion of the light beam reflected by the target object **178** will re-enter the objective lens **170** and return to a substantially collimated state. The portion of the beam that re-enters the objective lens **170** may be maximized by laterally offsetting the incoming collimated beam in order to introduce a specific angle to the focused light beam, as described in detail in U.S. Pat. No. 8,370,960, Modular Atomic Force Microscope, referred to above and incorporated herein by reference. A substantial part, but not all, of the reflected light beam that re-enters the objective lens **170**

reflects off the dichroic mirror **156** and is directed to the quarter-wave plate **152** which then converts the circularly polarized returning light beam into a linearly polarized light beam. Because the polarization orientation is now orthogonal to the polarization orientation of the original light beam that previously crossed the quarter-wave plate **152** in the other direction, the light beam reflects off the polarizing beamsplitter **144** instead of traversing it. In the event that the quarter-wave plate **152** has been replaced by a waveplate having retardance and orientation to compensate for phase shifts in optical elements coming after the quarter-wave plate **152**, as discussed above, the returning light beam reflects entirely off the polarizing beamsplitter **144**.

[0051] The reflected beam then impinges on a photodetector **182** which, when the present invention is being used to measure the deflection or oscillation of the probe, measures the position of the light beam. The two-dimensional position of the light beam on the photodetector **182** is used as a measure of the two-dimensional angular deviation of the target object **178** that reflected the light beam. However, when the present invention is employed to focus more than one light beam onto the probe (or the sample) to enable functionalities other than measuring probe displacement, the photodetector **182** can be used to measure the light power of the light beam.

[0052] A portion of the light beam that re-enters the objective lens **170** will traverse the dichroic mirror **156** and can be imaged using the camera system **186** if the target object **178** is illuminated by an appropriate light source, preferably a white light source. The camera system **186** can also image the focused light spot reflected from the target object **178**.

[0053] In order to assure that the brightness of the target object **178** is similar in magnitude to the brightness of the reflected light beam entering the camera system **186**, a color filter **190** can be used to selectively dim the light beam to any degree necessary. It may also be necessary to adjust the exposure time and aperture size provided by the camera system **186** to obtain proper exposure of the target object **178** and focused light spot. Even if only a small amount of the reflected light beam traverses the dichroic mirror **156** to the camera system **186** the beam will appear very bright due to its high power density. Therefore, it is anticipated that the filter **190** will be necessary to provide a good quality image in the camera system **186**.

[0054] As described earlier, translating the goniometric lens group **136** along its axis changes the axial location of the final focused spot relative to the front focal plane **174** of the objective lens **170**. Prior art would have positioned the light beam focus in the axial direction by either moving the objective lens **170**, or moving the target object **178**, or both. The present invention allows the light beam to be focused without moving the objective lens **170** or the target object **178**. The same will be true for the light beam from another optical beam position unit (or units), with their own goniometric lens groups **136**, present. The light beams such other units would enter the light path via other dichroic mirrors located between the dichroic mirror **156** of the first optical beam positioning unit and the objective lens **170**. FIG. 1 shows one **166** such dichroic mirror. FIG. 2 shows a light path with a multiplicity of optical beam position units and dichroic mirrors. When the goniometric lens group **136** of any one of such units is translated the axial location of the final focused spot of the relevant unit relative to the front focal plane **174** of the objective lens **170** is changed without either moving the objective lens **170**, or moving the target object **178**, or both. This is a significant

difference relative to prior art because moving the objective lens **170**, or moving the target object **178**, or both, in order to position the light beam focus in the axial direction for the benefit of one optical beam positioning unit could significantly degrade the performance of other optical beam positioning units.

Photothermal Excitation

[0055] In addition to being used to measure the deflection or oscillation of the probe, the light beam of an optical beam positioning unit can be used to photothermally excite mechanical vibrations of the probe. For this purpose light at the blue end of the visible spectrum is preferred. The inventors have used the beam from a laser emitting light with a wave length of 405 nm with satisfactory results.

[0056] In the prior art, a coating on some or all of the cantilever portion of the probe was required to convert heat from the light beam into mechanical strain in the probe, via different thermal expansion coefficients of the coated portion of the cantilever and the remainder of the probe. While the current invention is compatible with such coated cantilevers, it does not require a coating to photothermally induce mechanical vibrations of the probe. Due to the well-corrected optical design, the light beam focus in the present invention is significantly smaller than in the prior art. The smaller light beam focus produces larger thermal gradients that cause photothermal excitation even in probes fabricated from a single material. Because the material of the probe has nonzero thermal expansion, the thermal gradients produce strain gradients, especially when the light beam power is modulated to produce time-varying temperature gradients. For example, the light beam power can be changed sinusoidally as a function of time, producing a sinusoidal mechanical motion as required for amplitude-modulated atomic force microscopy. As described in prior art, such mechanical motion or vibration may also be enhanced by differences in thermal coefficients of expansion of two or more materials composing the probe in the case of heterogeneous probes.

[0057] Photothermal excitation of the probe may also be used in conjunction with other methods to form hybrid modes of cantilever excitation. For example, the cantilever may be driven by piezoacoustic excitation at a first resonance while simultaneously driven by photothermal excitation at a second resonance. This combination is useful if a large amplitude of oscillation, achievable with piezoacoustic excitation, is necessary for a first resonance, while the clean response of photothermal excitation is preferable for driving a second resonance. Alternative schemes for excitation may be developed to meet specific experimental goals. For example, photothermal excitation could be used to excite mechanical motion at a resonance of the cantilever while piezoacoustic excitation is used to drive the cantilever at a frequency that is not close to a cantilever resonance. Some of these schemes of excitation may involve frequency modulation or frequency tracking, in order to measure mechanical parameters of the sample, the probe or the tip of the probe. In this case, photothermal excitation is known in the prior art to provide an advantage because it provides a transfer function from excitation voltage to mechanical motion that is substantially independent of frequency and free from spurious resonances.

[0058] The location of the focused light beam on the probe used for photothermal excitation affects the drive amplitude of the probe. The relationship between location and drive amplitude is also frequency dependent because the probe has

a frequency response composed of many normal and torsional eigenmodes. There are locations that provide zero excitation of the second eigenmode, while providing non-zero excitation of the first eigenmode, for example. Depending on the experiment, it may be desirable to tune the drive amplitude of the probe at different frequencies. This may be achieved by modulating the power of the photothermal excitation light beam at particular frequencies, that may correspond to different eigenmodes of the probe, while rastering the focused spot relative to the probe and measuring the driven amplitude. It may be desirable, for example, to maximize the torsional (or normal) vibration response of the probe, while minimizing the response of the normal (or torsional) deflection of the probe in certain experiments.

blueTherm

[0059] The light beam of an optical beam positioning unit can also be used to heat certain parts of the target object **178** to a varying degree. For this purpose light at the blue end of the visible spectrum is preferred. The inventors have used the beam from a laser emitting light with a wave length of 405 nm with satisfactory results.

[0060] Heating certain parts of the target object **178** to a varying degree causes a desirable steady-state temperature gradient to form in the probe or the sample at time scales that are longer than the mechanical time constant of the object being heated. Such a steady-state temperature gradient may occur while vibrations of the target object **178** are being induced by modulating the light beam at faster time scales. In any case, with the probe the temperature gradient can be optimized by adjusting the total optical power of the light beam and the beam position relative to the probe to control the temperature of a certain part of the probe, such as the tip of the cantilever. The variable temperature of the probe and the tip of the cantilever can be used to induce thermally activated changes in the sample according to any desired experimental protocol. One category of such experiments is known as local thermal analysis. In the prior art it is carried out using a special probe with heating elements and even a thermometer microfabricated in the probe. Such special probes are costly and are only available in a few spring constant values. With the present invention however such special probes are unnecessary as the focused light beam of the optical beam positioning unit can heat any existing probe useful for a local thermal analysis experiment.

[0061] Although the present invention can photothermally excite mechanical motion in uncoated probes, it may still be beneficial to optimize the optical and thermal properties of the probe for heating with the light beam of an optical beam positioning unit. For example, the reflectivity of the coating of the probe may be tuned appropriately, and the conductivity of the probe may be patterned, through selective doping, in order to allow heat to flow to the tip of the cantilever more readily than to flow to the base of the probe (or vice versa). Furthermore, the probe may be shaped in order to facilitate conduction of heat to the tip of the cantilever; for example, the tip of the cantilever may be hollow such that the incident beam is absorbed closer to the tip. Patterning a metallic coating on the probe or the tip of the cantilever may also be used to maximize the heat flow to the tip to attain higher tip temperatures for a given laser power. Coating only the end of the probe near the tip, while keeping the bulk of the probe uncoated, may also be beneficial by reducing unwanted bend-

ing of the probe caused by thermal expansion coefficient differences between the coating material and the probe material.

[0062] It is beneficial to measure the temperature of the probe for several types of experiments, such as calibrating the spring constant based on thermomechanical motion. In the present invention, the temperature of the probe may be quantified by measuring the change in the resonant frequency of the probe while changing the power of the light beam, by turning the light beam on and off for example. The temperature of the probe is related to its resonant frequency because Young's modulus of the probe is dependent on the temperature of the probe. Furthermore, the residual stress in coated probe may have a temperature dependence that can impact the relationship between the resonant frequency and the temperature. The temperature may also be inferred by measuring the deflection of the cantilever before and after turning the light beam on (or off).

[0063] Frequency-modulated AFM (FM-AFM) imaging has garnered a great deal of attention because of its high spatial resolution in air, vacuum and even fluid. Even with the prior art, FM-AFM has demonstrated success at imaging single atomic defects, imaging individual chemical bonds between surface atoms and measuring the force as a single atom was moved across a surface.

[0064] FM-AFM also permits simultaneous measurement of dissipative interactions between the tip of the cantilever and the sample. Dissipation is a combined effect of multiple interactions including long range electrostatic and magnetic interactions, as well as hysteretic interatomic forces associated with the approach and retraction of the tip of the cantilever from the surface. In the prior art the measurement of dissipation has been unreliable. Dissipation is difficult to quantify and relate to underlying physical mechanisms and results have not been reproducible. One important feature required for accurate dissipation measurements is frequency independent probe excitation. Specifically, coupling between the drive amplitude and frequency can lead to spurious dissipation measurements. Piezoacoustic excitation, especially in liquid, suffers from a "forest of peaks" in the transfer function between the excitation voltage and the mechanical motion. These peaks are caused by spurious resonances in the mechanical system, such as the resonances of a cantilever holder or liquid droplet. The peaks are not reproducible from one experiment to the next, and can even drift during one experiment. Because of these peaks, piezoacoustic excitation is very frequency-dependent, sometimes changing by a factor of ten within the probe bandwidth. Since the photothermal drive described here is substantially constant or at the least varies only slowly over typical operational frequencies, it provides more accurate dissipation measurements than the piezoacoustic excitation commonly used in the prior art and is much more reproducible.

blueClean

[0065] After what is usually substantial use, AFM probes become contaminated by interaction with the sample. Contaminated probes must either be replaced by new probes or where feasible cleaned. In typical laboratory settings, probes are often cleaned ex situ using an assortment of chemical solutions, sometimes combined with UV exposure. In prior art, a dedicated apparatus was often used for cleaning probes. The cleaning of probes frequently involves a significant amount of time, and often is not successful. However replacing a contaminated probe with a new one can cost a significant

amount of money. In either case, the experiment must be halted to remove and replace the existing probe from the AFM. Removing and replacing the probe also loses information regarding the sample location being imaged.

[0066] Heating the probe may be used as a method of cleaning the tip of the cantilever. For this purpose light at the blue end of the visible spectrum is preferred. The inventors have used the beam from a laser emitting light with a wave length of 405 nm with satisfactory results.

[0067] Before, during, or after imaging a sample, the light beam of an optical beam positioning unit may be turned on momentarily to heat the tip of the cantilever in order to modify the tip coating or to break down, thermally modify or remove contaminations that have adhered to the tip. This method of cleaning or modifying the tip of the cantilever has the advantage over prior art that the process can be performed in situ, while the probe is in close proximity to the sample. The fact that the tip of the cantilever can be cleaned or modified without removing it from the AFM is a time-saving and important improvement in that it allows the continuation of the experiment after cleaning or modification without any cumbersome repositioning of the probe.

[0068] A well-parameterized probe is very important in nanomechanical measurements, such as stiffness, storage and loss moduli, loss tangents, adhesion, indentation and a host of other parameters known to one skilled in the art. For this application a clean probe is of great importance.

Sample Modification

[0069] The light beam of an optical beam positioning unit may be used for inducing photochemical, photovoltaic, photothermal, pyroelectric or other light sensitive changes to specific portions of the sample. For photothermal changes light at the blue end of the visible spectrum is preferred. The inventors have used the beam from a laser emitting light with a wave length of 405 nm with satisfactory results. For photochemical, photovoltaic and pyroelectric changes light with a variety of wave lengths is satisfactory.

[0070] Changes of this character may be accomplished either with the beam positioned on the probe or with the beam off the probe. The positioning of the light beam allows the user to select the locations of the sample that may undergo such changes, while the total power of the light beam can be tuned to vary the degree of changes induced in the chosen sample location. Moving the position of the focused light beam in two or three dimensions while varying the light power of the light beam enables the preparation or modification of the AFM sample before, during, or after imaging.

[0071] Although only a few embodiments have been disclosed in detail above, other embodiments are possible and the inventors intend these to be encompassed within this specification. The specification describes specific examples to accomplish a more general goal that may be accomplished in another way. This disclosure is intended to be exemplary, and the claims are intended to cover any modification or alternative which might be predictable to a person having ordinary skill in the art. For example, other devices, and forms of modularity, can be used.

[0072] Also the inventors intend that only those claims which use the words "means for" are intended to be interpreted under 35 USC 112, sixth paragraph. Moreover, no limitations from the specification are intended to be read into any claims, unless those limitations are expressly included in the claims. The computers described herein may be any kind

of computer, either general purpose, or some specific purpose computer such as a workstation. The computer may be a Pentium class computer, running Windows XP or Linux, or may be a Macintosh computer. The computer may also be a handheld computer, such as a PDA, cellphone, or laptop.

[0073] The programs may be written in C, or Java, Brew or any other programming language. The programs may be resident on a storage medium, e.g., magnetic or optical, e.g. the computer hard drive, a removable disk or media such as a memory stick or SD media, or other removable medium. The programs may also be run over a network, for example, with a server or other machine sending signals to the local machine, which allows the local machine to carry out the operations described herein.

What is claimed is:

1. An atomic force microscope system operating to characterize a sample, comprising:

- a chassis;
- an atomic force microscope cantilever;
- an isolation system, that encloses the chassis, and provides acoustic and thermal isolation for the atomic force microscope system;
- a view system, coupled to said chassis, that has optical features which allow optical viewing in an area of the cantilever or of the sample;

a head system, coupled to said chassis, that directs the optical beam onto the cantilever and obtains a return beam from the cantilever indicative of movement of the cantilever;

an optical emitter assembly, having a supporting structure, an emitter held within first surfaces of said supporting structure and a lens coupled to second surfaces of said supporting structure, where said supporting structure is insertable and removable from said head system;

a scanner system, coupled to said chassis, that includes a holder for the cantilever, a holder for the sample which is mounted below the cantilever, a mechanism for scanning the sample in the X, Y and Z dimensions, and a mechanism for translating the cantilever in the Z direction relative to the sample which permits the cantilever to be translated vertically downward to the point where the tip of the cantilever engages the sample, said scanner system minimizing the noise coupled into images and measurements of the sample; and

an electronics system, mounted outside the isolation system, that operates to acquire and process images and measurements of the sample.

* * * * *